

THESE END FRAMES ARE HANDED. THEY WILL ONLY FIT
CLEANLY AND SQUARELY WITH THE WINDOWS ON ONE END.
DO A DRY FIT FIRST TO MAKE SURE IT IS THE
RIGHT PIECE YOU ARE FITTING



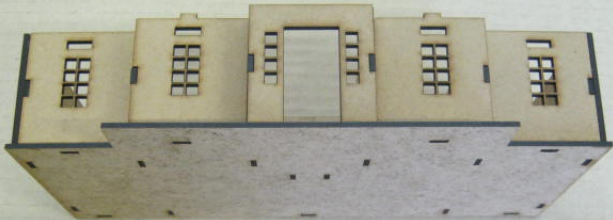




AS PER PIC 14A, THESE FRAMES ARE HANDED, DRY FIT TO CHECK BEFORE GLUING







NOTE THAT THE THICKER EDGE OF EACH FRAME GOES TOWARDS THE CENTRE OF THE MODEL.





AS PER PIC 16A, THICKER EDGE OF FRAME FITTED TOWARDS THE CENTRE











THERE ARE TWO SIZES OF THESE
PILLARS, 46 & 48MM.
46MM FIT THE TOP
48MM FIT THE BOTTOM
CHECK BEFORE FITTING
THAT YOU HAVE THE CORRECT SIZE
FOR THAT FLOOR









