

NOTE SMALL  
FRAME PIECE

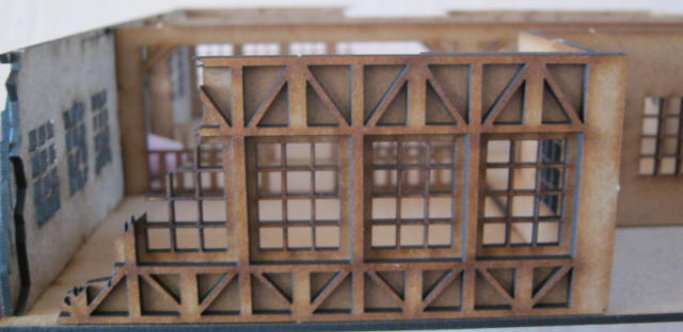


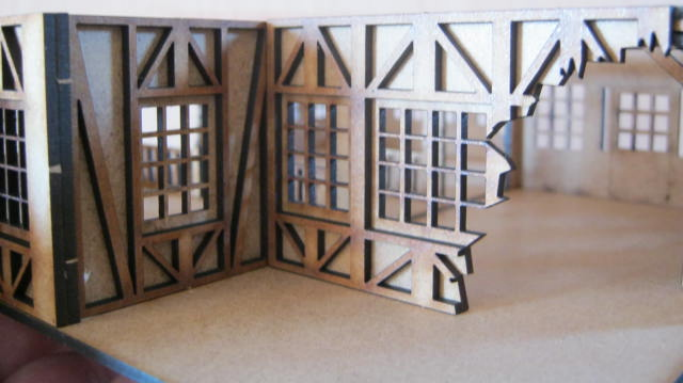




FIT THIS PART BEFORE THE  
DOOR FRAMING PART



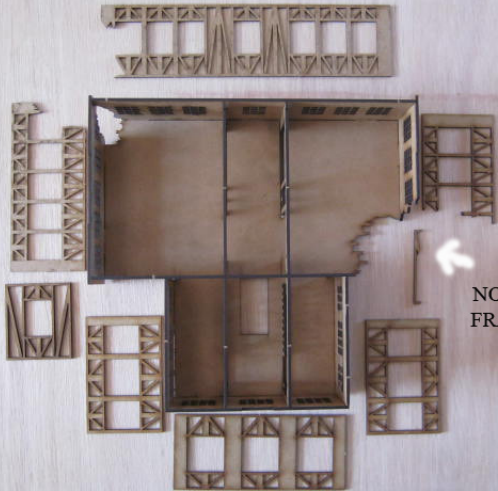










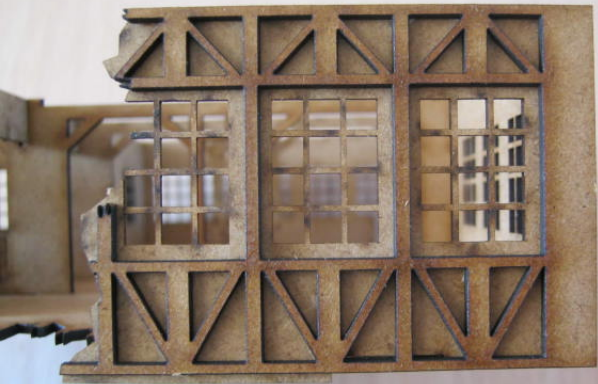


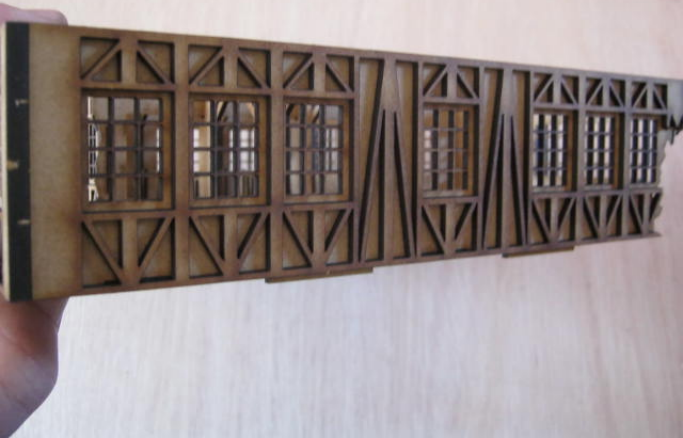
NOTE SMALL  
FRAME PIECE



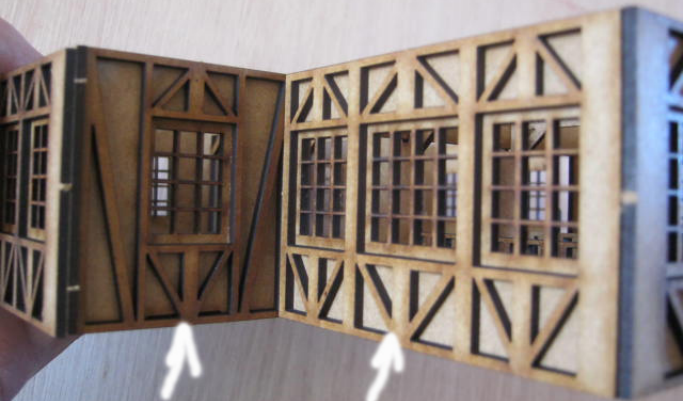
FIT THIS PART BEFORE  
THE LARGER WALL FRAME











FIT THIS PANEL BEFORE THIS PANEL

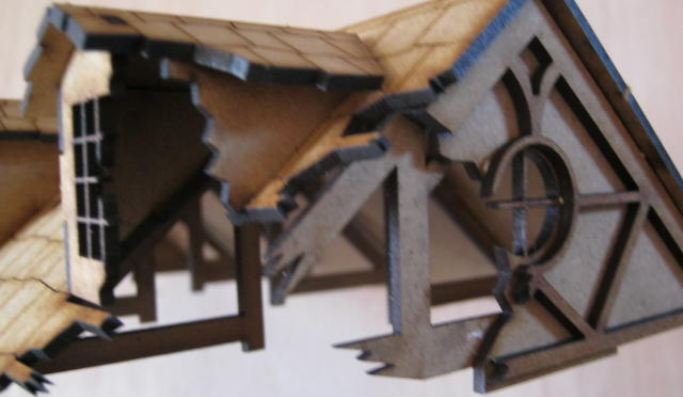












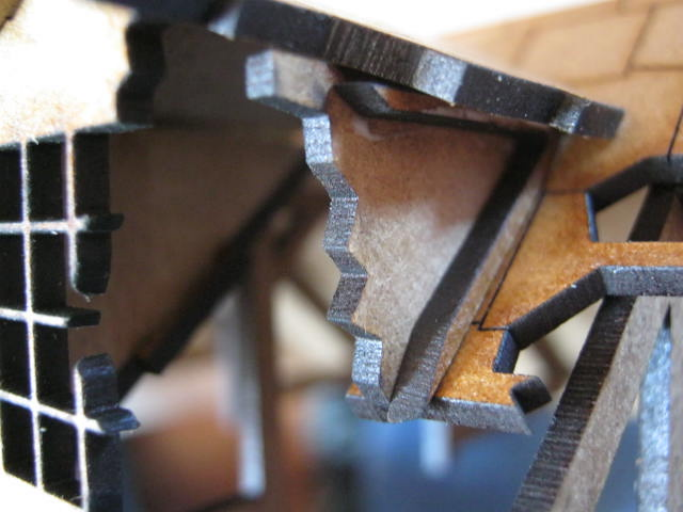














THE LINE IS TO GIVE A GUIDE ON TRIMMING THE PART  
AT AN ANGLE SO THAT IT FITS FLUSH WITH THE ROOF PANEL  
THIS PART CAN BE CUT OFF WITH A CRAFT KNIFE OR RUB IT ON  
SOME SANDPAPER UNTIL IT'S THE REQUIRED SIZE. THE  
NEXT FEW PHOTOS SHOW THIS IN DETAIL

















